



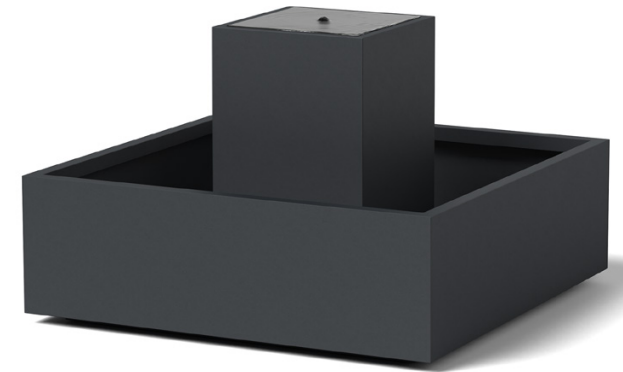
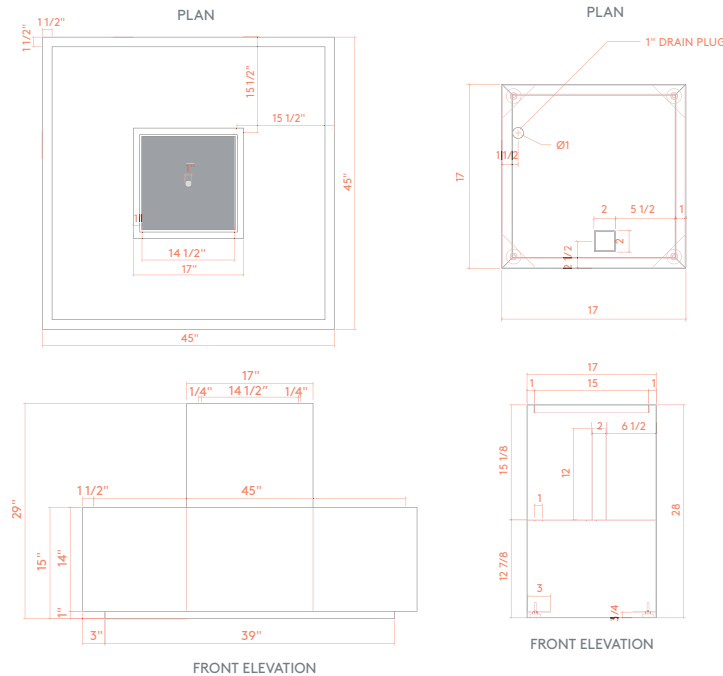
132 Pierpont Avenue, Garden Level
 Salt Lake City, UT 84101
 info@ore.design | 801.936.0499
ore.design

5001 COLUMN & BASE WATER FEATURE

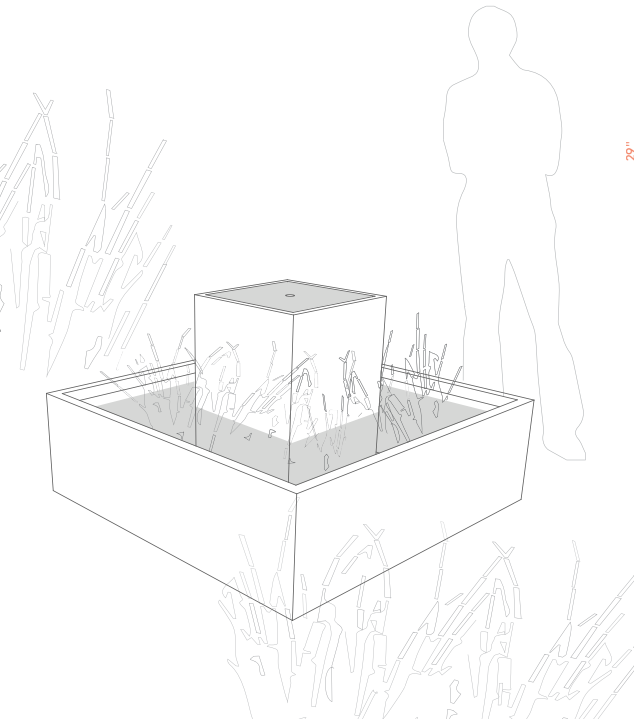
PRODUCT DESCRIPTION: The COLUMN & BASE WATER FEATURE offers a simple, adaptive design with a center column and square pool bottom. The fountain can be incorporated anywhere in a planting area and finished in any of our product colors, allowing seamless coordination with Ore containers. This water feature includes an electronic 300 gph pump and hose, ultimate black granite top, and a standing-water drain plug for routine maintenance, washing, and water replacement.

5001 COLUMN & BASE WATER FEATURE: WEIGHT: 120 lbs. Steel | 78 lbs. Aluminum PLANTER CAPACITY: 12.5 cu ft
 DESCRIPTION: Base: 45"L x 45"W x 15"H, Column: 17"L x 17"W x 28"H, Overall: 29"H

Formed of steel or aluminum, our water features are shaped, welded, powder coated (as desired), and packaged exclusively at Ore's independent manufacturing facility in Salt Lake City, Utah. For more information, please contact your Ore Project Manager.



5001 | Column & Base Water Feature in Standard Powder Coat Charcoal Grey



LEED® POINTS:

- 1) Material Content
- 2) Indoor Environmental Quality - Manufacturing
- 3) Indoor Environmental Quality - Low VOCs
- 4) Material Reuse
- 5) Proximity

Final points achieved will vary according to materials and destination.

LEGAL INFORMATION:

ALL RIGHTS RESERVED. INFORMATION IN THIS DOCUMENT IS CONFIDENTIAL AND IS EXCLUSIVE PROPERTY OF ORE INCORPORATED. DELIVERY OF THIS DOCUMENT OR ANY COPY THEREOF OR DISCLOSURE OF SUCH INFORMATION TO UNAUTHORIZED PERSONS IS FORBIDDEN WITHOUT EXPRESSED WRITTEN PERMISSION OF ORE INC.

TO SPECIFY THIS PRODUCT:

- 1) Indicate product name, product number, description, and size.
- 2) Select material: recycled steel, COR-TEN, or recycled aluminum. If recycled steel or aluminum is specified, select powder-coat color or natural patina finish.
- 3) Select product-specific options. Standard options may be viewed at ore.design.