



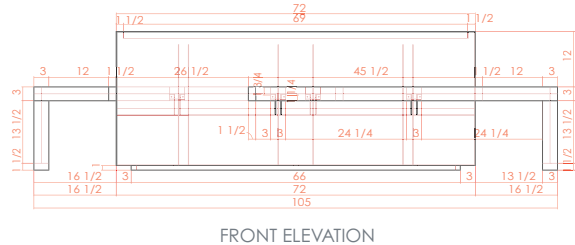
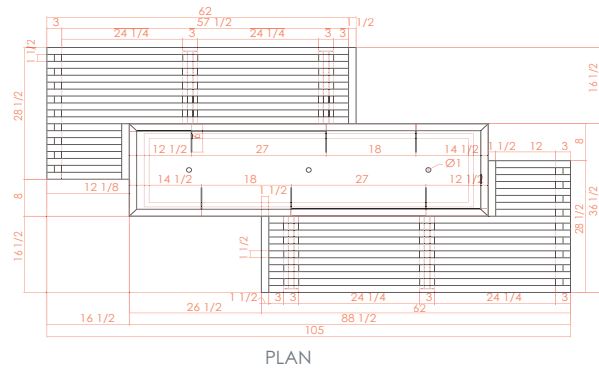
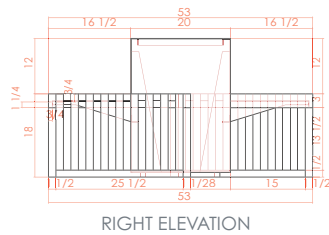
132 Pierpont Avenue, Garden Level
 Salt Lake City, UT 84101
 info@ore.design | 801.936.0499
ore.design

3008 LINEAR PLANTER BENCH

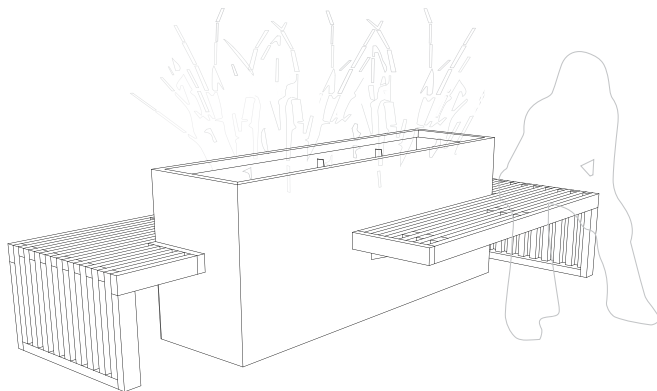
PRODUCT DESCRIPTION: The LINEAR PLANTER bench incorporates a unique, wraparound design, with wood benches flanking a rectangular plant container. The metal container may be finished in any of our standard powder-coat colors or in your preferred custom color. This bench may be fitted for optional anchoring.

3008 LINEAR PLANTER BENCH: ONE BENCH: WEIGHT: 390 lbs. Steel | 195 lbs. Aluminum | DIMENSION: 88.5”L x 36.625”W x 36”H
 TWO BENCHES: WEIGHT: 461 lbs. Steel | 266 lbs. Aluminum | DIMENSION: 105”L x 53.25”W x 36”H
 PLANTER DIMENSIONS: 72”L x 20”W x 36”H | CAPACITY: 28.5 cu ft

Formed of either steel or aluminum, our LINEAR PLANTER benches are shaped, welded, powder coated (as desired), and packaged exclusively at Ore’s independent manufacturing facility in Salt Lake City, Utah. For more information, please contact your Ore Project Manager.



3008 | Linear Planter Bench in Standard Powder Coat Charcoal Grey



LEED® POINTS:

- 1) Material Content
- 2) Indoor Environmental Quality - Manufacturing
- 3) Indoor Environmental Quality - Low VOCs
- 4) Material Reuse
- 5) Proximity

Final points achieved will vary according to materials and destination.

LEGAL INFORMATION:

ALL RIGHTS RESERVED. INFORMATION IN THIS DOCUMENT IS CONFIDENTIAL AND IS EXCLUSIVE PROPERTY OF ORE INCORPORATED. DELIVERY OF THIS DOCUMENT OR ANY COPY THEREOF OR DISCLOSURE OF SUCH INFORMATION TO UNAUTHORIZED PERSONS IS FORBIDDEN WITHOUT EXPRESSED WRITTEN PERMISSION OF ORE INC.

TO SPECIFY THIS PRODUCT:

- 1) Indicate product name, product number, description, and size.
- 2) Select material: recycled steel, COR-TEN, or recycled aluminum. If recycled steel or aluminum is specified, select powder-coat color or natural patina finish.
- 3) Select product-specific options. Standard options may be viewed at ore.design.

3008 LINEAR PLANTER BENCH