



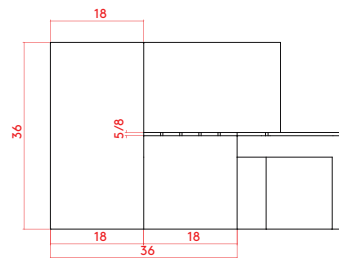
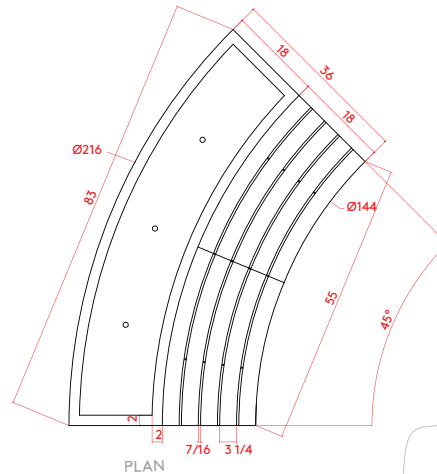
132 Pierpont Avenue, Garden Level  
 Salt Lake City, UT 84101  
 info@ore.design | 801.936.0499  
[ore.design](http://ore.design)

## 3007 CURVED PLANTER BENCH

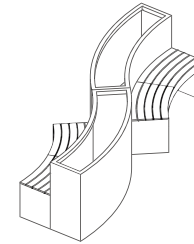
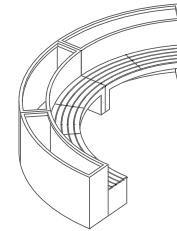
**PRODUCT DESCRIPTION:** The CURVED PLANTER bench does double duty as a plant container and garden seating. This sleek, curved bench may be finished in any of our standard powder-coat colors or in your preferred custom color. This bench may be fitted for optional anchoring.

**3007 CURVED PLANTER BENCH:** WEIGHT: 320 lbs. Steel | 140 lbs. Aluminum | 40 lbs Wood  
 DIMENSION: 83"L x 36"W x 36"H  
 PLANTER DIMENSIONS: 83"L x 18"W x 36"H CAPACITY: 28.5 cu ft

Formed of either steel or aluminum, our CURVED PLANTER benches are shaped, welded, powder coated (as desired), and packaged exclusively at Ore's independent manufacturing facility in Salt Lake City, Utah. For more information, please contact your Ore Project Manager.



FRONT ELEVATION



3007 | Curved Planter Bench in Standard Powder Coat Black with Accoya Bench Top

**LEED® POINTS:**

- 1) Material Content
- 2) Indoor Environmental Quality - Manufacturing
- 3) Indoor Environmental Quality - Low VOCs
- 4) Material Reuse
- 5) Proximity

Final points achieved will vary according to materials and destination.

**LEGAL INFORMATION:**

ALL RIGHTS RESERVED. INFORMATION IN THIS DOCUMENT IS CONFIDENTIAL AND IS EXCLUSIVE PROPERTY OF ORE INCORPORATED. DELIVERY OF THIS DOCUMENT OR ANY COPY THEREOF OR DISCLOSURE OF SUCH INFORMATION TO UNAUTHORIZED PERSONS IS FORBIDDEN WITHOUT EXPRESSED WRITTEN PERMISSION OF ORE INC.

**TO SPECIFY THIS PRODUCT:**

- 1) Indicate product name, product number, description, and size.
- 2) Select material: recycled steel, COR-TEN, or recycled aluminum. If recycled steel or aluminum is specified, select powder-coat color or natural patina finish.
- 3) Select product-specific options. Standard may be viewed at [ore.design](http://ore.design).