



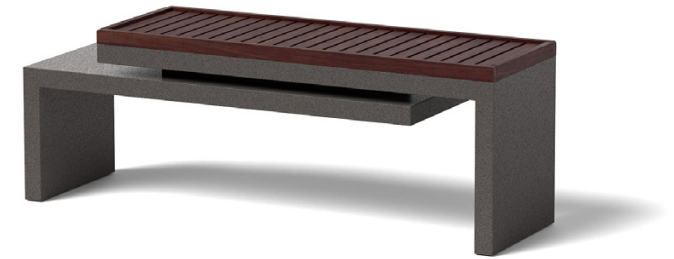
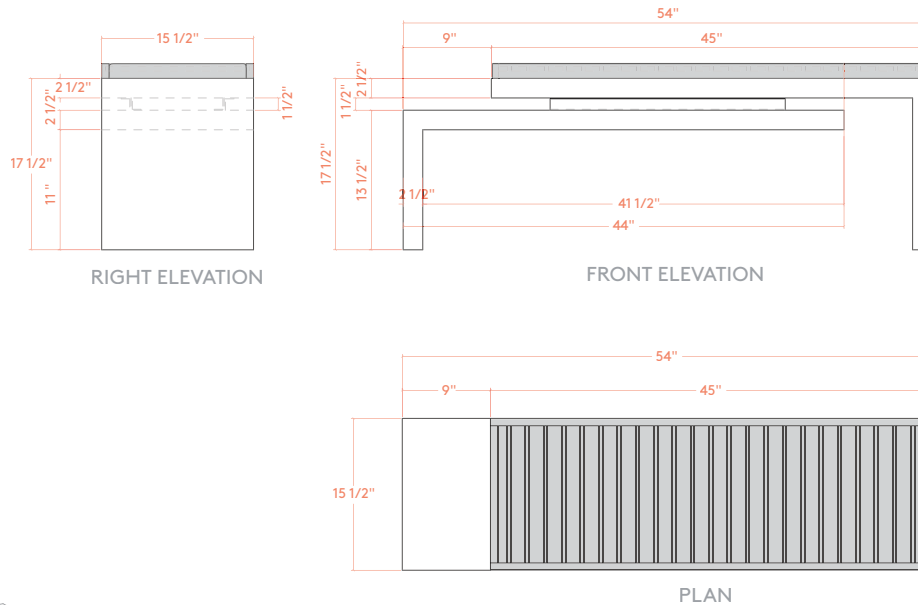
132 Pierpont Avenue, Garden Level
 Salt Lake City, UT 84101
 info@ore.design | 801.936.0499
ore.design

3003 CANTILEVER BENCH

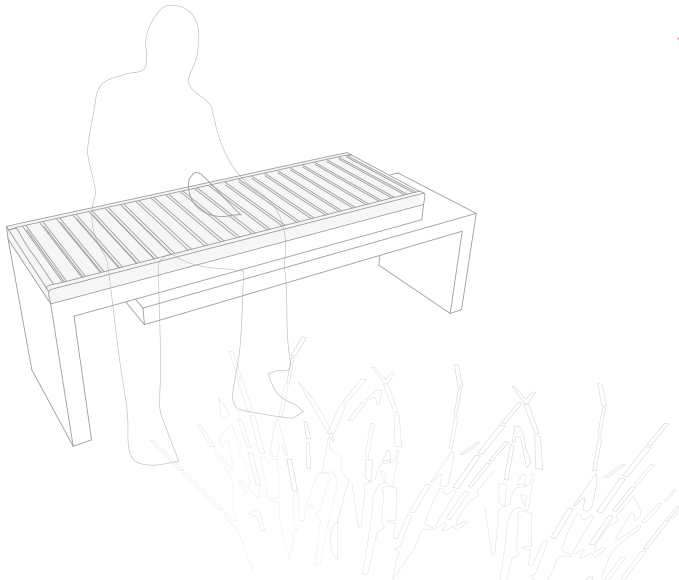
PRODUCT DESCRIPTION: The CANTILEVER bench features a distinctive, overlapping platform design. An optional ipe-wood top lends additional contrast and warmth. This bench may be finished in any of our standard powder-coat colors or in your preferred custom color.

3003 CANTILEVER BENCH: WEIGHT: 130 lbs. Steel | 66 lbs. Aluminum | 18 lbs. Wood Slat Top DIMENSION: 54" L x 15.5" W x 17.5" H

Formed of either steel or aluminum, our CANTILEVER benches are shaped, welded, powder coated (as desired), and packaged exclusively at Ore's independent manufacturing facility in Salt Lake City, Utah. For more information, please contact your Ore Project Manager.



3003 | Cantilever Bench in Standard Powder Coat Hammered Silver with Optional Ipe Wood Top



LEED® POINTS:

- 1) Material Content
- 2) Indoor Environmental Quality - Manufacturing
- 3) Indoor Environmental Quality - Low VOCs
- 4) Material Reuse
- 5) Proximity

Final points achieved will vary according to materials and destination.

LEGAL INFORMATION:

ALL RIGHTS RESERVED. INFORMATION IN THIS DOCUMENT IS CONFIDENTIAL AND IS EXCLUSIVE PROPERTY OF ORE INCORPORATED. DELIVERY OF THIS DOCUMENT OR ANY COPY THEREOF OR DISCLOSURE OF SUCH INFORMATION TO UNAUTHORIZED PERSONS IS FORBIDDEN WITHOUT EXPRESSED WRITTEN PERMISSION OF ORE INC.

TO SPECIFY THIS PRODUCT:

- 1) Indicate product name, product number, description, and size.
- 2) Select material: recycled steel, COR-TEN, or recycled aluminum. If recycled steel or aluminum is specified, select powder-coat color or natural patina finish.
- 3) Select product-specific options. Standard options may be viewed at ore.design.