



132 Pierpont Avenue, Garden Level
 Salt Lake City, UT 84101
 info@ore.design | 801.936.0499
ore.design

1100 | 1101 | 1102 LOW RECTANGLE

PRODUCT DESCRIPTION: The LOW RECTANGLE planter group features linear planting space, low lines, and a variety of color options. RECTANGLE containers are often paired with corner containers to help tie spaces together.

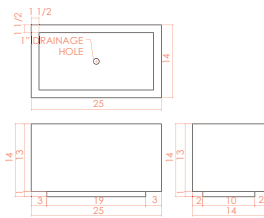
1100 SMALL LOW: WEIGHT: 42 lbs. Steel | 20 lbs. Aluminum CAPACITY: 2.5 cu ft DIMENSION: 25”L x 14”W x 14”H

1101 MEDIUM LOW: WEIGHT: 63 lbs. Steel | 27 lbs. Aluminum CAPACITY: 4.25 cu ft DIMENSION: 42”L x 14”W x 14”H

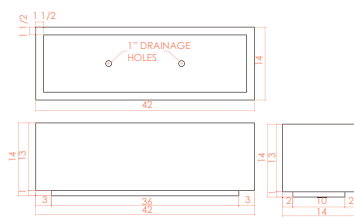
1102 LARGE LOW: WEIGHT: 84 lbs. Steel | 36 lbs. Aluminum CAPACITY: 6 cu ft DIMENSION: 60”L x 14”W x 14”H

Formed of either steel or aluminum, our RECTANGLE containers are shaped, welded, powder coated (as desired), and packaged exclusively at Ore’s independent manufacturing facility in Salt Lake City, Utah.
 For more information, please contact your Ore Project Manager.

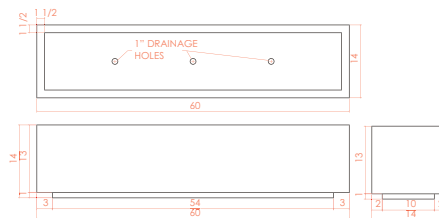
OPTIONS:       



1100 - Low



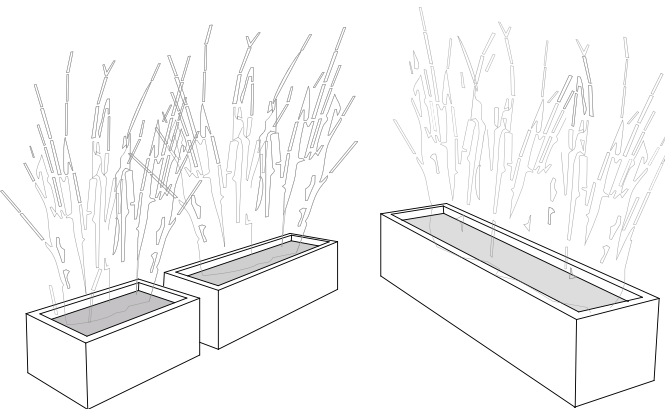
1101 - Low



1102 - Low



1100 | Small Low Rectangle in Standard Powder Coat Metallic Silver



LEED® POINTS:

- 1) Material Content
- 2) Indoor Environmental Quality - Manufacturing
- 3) Indoor Environmental Quality - Low VOCs
- 4) Material Reuse
- 5) Proximity

Final points achieved will vary according to materials and destination.

LEGAL INFORMATION:

ALL RIGHTS RESERVED. INFORMATION IN THIS DOCUMENT IS CONFIDENTIAL AND IS EXCLUSIVE PROPERTY OF ORE INCORPORATED. DELIVERY OF THIS DOCUMENT OR ANY COPY THEREOF OR DISCLOSURE OF SUCH INFORMATION TO UNAUTHORIZED PERSONS IS FORBIDDEN WITHOUT EXPRESSED WRITTEN PERMISSION OF ORE INC.

TO SPECIFY THIS PRODUCT:

- 1) Indicate product name, product number, description, and size.
- 2) Select material: recycled steel, COR-TEN, or recycled aluminum. If recycled steel or aluminum is specified, select powder-coat color or natural patina finish.
- 3) Select product-specific options. Standard options may be viewed at ore.design.