

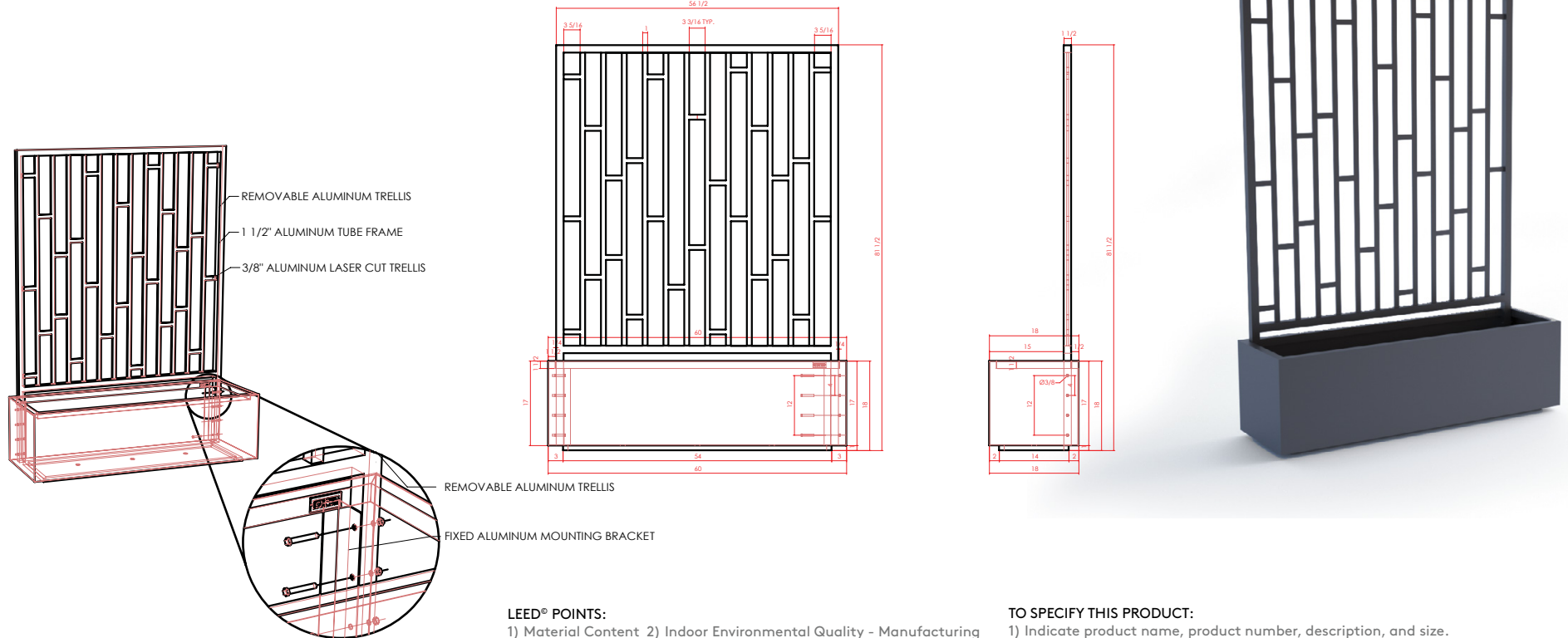


132 Pierpont Avenue, Garden Level  
 Salt Lake City, UT 84101  
 info@ore.design | 801.936.0499  
[ore.design](http://ore.design)

## ALUMINUM LATTICE

**OPTION DESCRIPTION:** Our pre-assembled Aluminum Lattice mechanically fastens to internal brackets located within the container. The Aluminum Lattice may be powder coated to match the container or you may choose a different color for contrast. Our Project Managers are on hand to advise you on the best options for your project.

Please note that this option is compatible with other functional options such as irrigation sleeves, drainage fittings, casters, and adjustable feet. To determine which containers are compatible with the Aluminum Lattice option, look for this icon in our catalog specification sheets.



- LEED® POINTS:**
- 1) Material Content
  - 2) Indoor Environmental Quality - Manufacturing
  - 3) Indoor Environmental Quality - Low VOCs
  - 4) Material Reuse
  - 5) Proximity

Final points achieved will vary according to materials and destination.

**LEGAL INFORMATION:**  
 ALL RIGHTS RESERVED. INFORMATION IN THIS DOCUMENT IS CONFIDENTIAL AND IS EXCLUSIVE PROPERTY OF ORE INCORPORATED. DELIVERY OF THIS DOCUMENT OR ANY COPY THEREOF OR DISCLOSURE OF SUCH INFORMATION TO UNAUTHORIZED PERSONS IS FORBIDDEN WITHOUT EXPRESSED WRITTEN PERMISSION OF ORE INC.

- TO SPECIFY THIS PRODUCT:**
- 1) Indicate product name, product number, description, and size.
  - 2) Select material: recycled steel, COR-TEN, or recycled aluminum. If recycled steel or aluminum is specified, select powder-coat color or natural patina finish.
  - 3) Select product-specific options. Standard options may be viewed at [ore.design](http://ore.design).

