



132 Pierpont Avenue, Garden Level
 Salt Lake City, UT 84101
 info@ore.design | 801.936.0499
ore.design

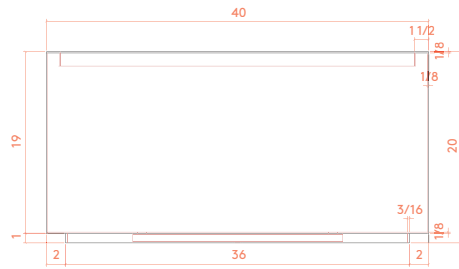
1240 | 1245 OVAL

PRODUCT DESCRIPTION: The OVAL planter group features a slim, sculptural design that provides a wide planting-bed area. OVAL containers are available in two sizes and a variety of colors.

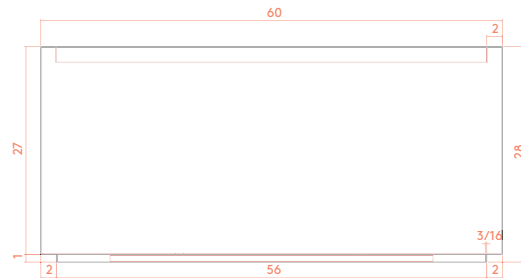
1240 MEDIUM OVAL: WEIGHT: 105 lbs. Steel | 50 lbs. Aluminum CAPACITY: 7.25 cu ft DIMENSION: 40”L x 20”W x 20”H
1245 LARGE OVAL: WEIGHT: 220 lbs. Steel | 110 lbs. Aluminum CAPACITY: 24.5 cu ft DIMENSION: 60”L x 30”W x 28”H

Formed of either steel or aluminum, our containers are shaped, welded, powder coated (as desired), and packaged exclusively at Ore’s independent manufacturing facility in Salt Lake City, UT. For more information, please contact your Ore Project Manager.

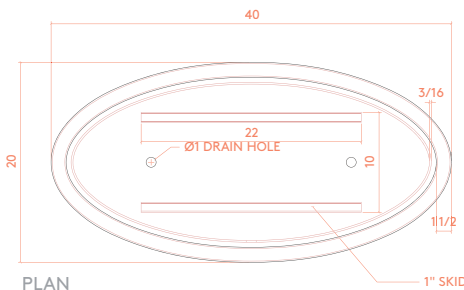
OPTIONS:



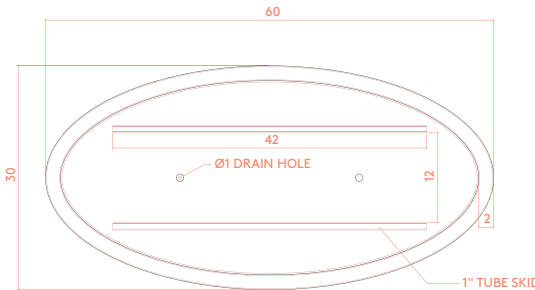
FRONT ELEVATION



FRONT ELEVATION



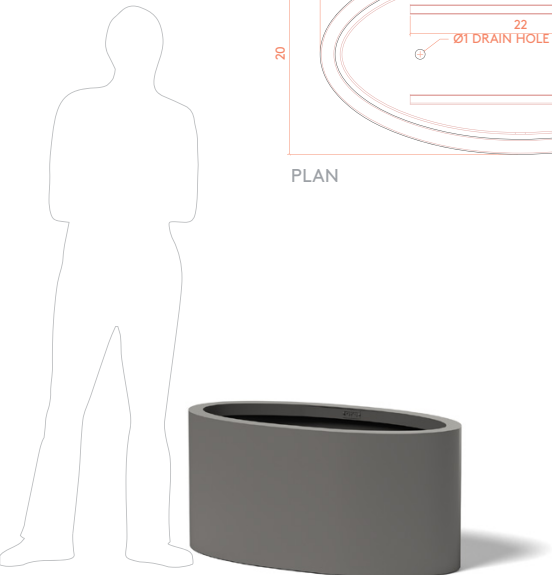
PLAN



PLAN



1240 | Medium Oval in Standard Powder Coat Black



LEED® POINTS:

- 1) Material Content
- 2) Indoor Environmental Quality - Manufacturing
- 3) Indoor Environmental Quality - Low VOCs
- 4) Material Reuse
- 5) Proximity

Final points achieved will vary according to materials and destination.

LEGAL INFORMATION:

ALL RIGHTS RESERVED. INFORMATION IN THIS DOCUMENT IS CONFIDENTIAL AND IS EXCLUSIVE PROPERTY OF ORE INCORPORATED. DELIVERY OF THIS DOCUMENT OR ANY COPY THEREOF OR DISCLOSURE OF SUCH INFORMATION TO UNAUTHORIZED PERSONS IS FORBIDDEN WITHOUT EXPRESSED WRITTEN PERMISSION OF ORE INC.

TO SPECIFY THIS PRODUCT:

- 1) Indicate product name, product number, description, and size.
- 2) Select material: recycled steel, COR-TEN, or recycled aluminum. If recycled steel or aluminum is specified, select powder-coat color or natural patina finish.
- 3) Select product-specific options. Standard options may be viewed at ore.design.