



132 Pierpont Avenue, Garden Level  
 Salt Lake City, UT 84101  
 info@ore.design | 801.936.0499  
[ore.design](http://ore.design)

## 6080 | 6100 SURFACE 4-SIDED SLAT FINISHES

**SURFACE 4-SIDED SLAT:** Inspired by architecture, Ore's extensive portfolio of cladding options maximizes customization with an extensive variety of materials and colors. Our selection of durable, weather-resistant products ensures high-quality results with endless creative potential.

Our 6080/6100 4-SIDED SLAT FINISHES may be ordered wrap around RECTANGLE or CUBE containers with a gridded, rectangular panel design.

### FIBRE C by Rieder

Fibre C is a glass fibre, reinforced, lightweight, stable concrete cladding material that withstands the effects of weather and environmental conditions, while combining durability and design.

### TRESPA®

Trespa® is a durable, high-pressure, compact laminate that yields a highly stable, durable cladding panel with exceptional weather resistance and zero maintenance required.

### PRODEMA

Prodemas is a composite panel with a natural wood-face veneer that resists the effects of sunlight, chemical effects, and the damage caused by atmospheric agents.

### IPE

FSC Certified ipe is a tropical hardwood tree that grows abundantly throughout Central and South America. Ipe wood is prized for its durability, strength, and natural resistance to decay, wet conditions, and insect infestation.

### ACCOYA®

EUTR compliant and made from legally harvested wood, FSC, PEFC and other regionally Certified woods, Accoya® wood is an ideal material for structural requirements. It has been used in bridges and other large structures around the world.

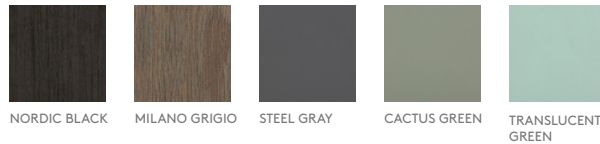
### ALUMINUM

Made from our recycled aluminum material, these tiles are used as slats or panels. They may be powder coated with a single color or multiple colors.

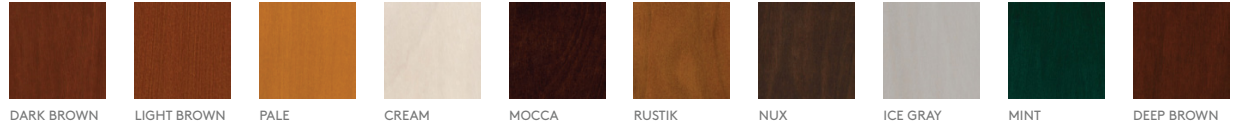
### FIBRE C



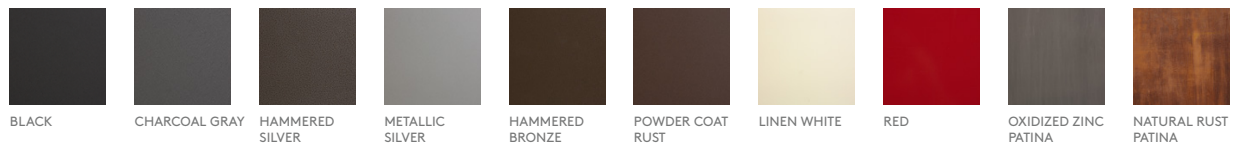
### TRESPA



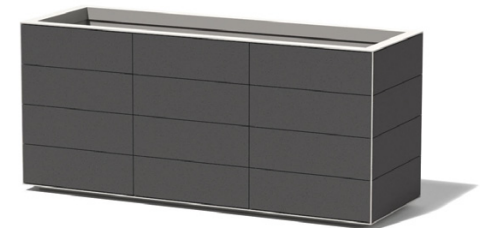
### PRODEMA



### ALUMINUM



### MISC.



### LEGAL INFORMATION:

ALL RIGHTS RESERVED. INFORMATION IN THIS DOCUMENT IS CONFIDENTIAL AND IS EXCLUSIVE PROPERTY OF ORE INCORPORATED. DELIVERY OF THIS DOCUMENT OR ANY COPY THEREOF OR DISCLOSURE OF SUCH INFORMATION TO UNAUTHORIZED PERSONS IS FORBIDDEN WITHOUT EXPRESSED WRITTEN PERMISSION OF ORE INC.