

## 1103 | 1107 | 1111 CORNER

**PRODUCT DESCRIPTION:** CORNER planters feature in low, mid, or high profile options to create or fill corner spaces as stand-alone pieces. When paired with our RECTANGLE containers, they also extend and complete planting runs. Our corner pieces provide generous planting depths and are offered in a variety of colors.

**1103 LOW CORNER:** WEIGHT 52 lbs. Steel | 24 lbs. Aluminum CAPACITY: 5.25 cu ft DIMENSION: 34"L x 14"W x 14"H

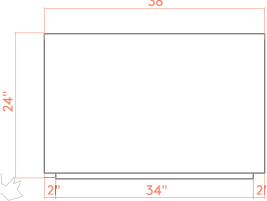
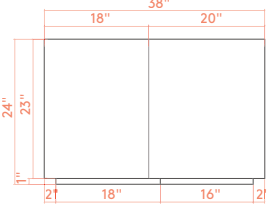
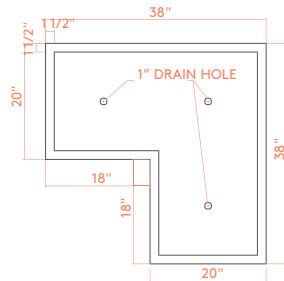
**1107 MID CORNER:** WEIGHT 93 lbs. Steel | 41 lbs. Aluminum CAPACITY: 9.25 cu ft DIMENSION: 36"L x 18"W x 18"H

**1111 HIGH CORNER:** WEIGHT 102 lbs. Steel | 60 lbs. Aluminum CAPACITY: 14.5 cu ft DIMENSION: 38"L x 20"W x 24"H

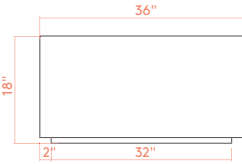
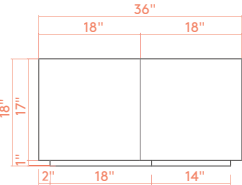
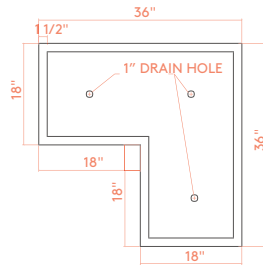
Formed of either steel or aluminum, our CORNER containers are shaped welded, powder coated (as desired), and packaged "exclusively at Ore's independent manufacturing facility in Salt Lake City, Utah.

For more information, please contact your Ore Project Manager.

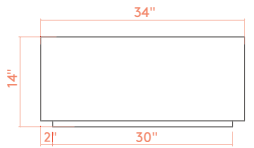
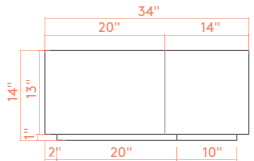
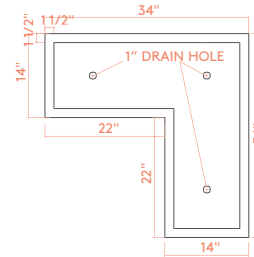
OPTIONS:       



1111 - High Corner



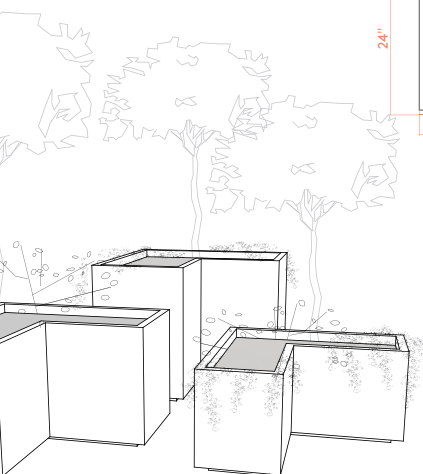
1107 - Mid Corner



1103 - Low Corner



1107 | Mid Corner in Standard  
Hammered Bronze



**LEED® POINTS:**

- 1) Material Content
- 2) Indoor Environmental Quality - Manufacturing
- 3) Indoor Environmental Quality - Low VOCs
- 4) Material Reuse
- 5) Proximity

Final points achieved will vary according to materials and destination.

**LEGAL INFORMATION:**

ALL RIGHTS RESERVED. INFORMATION IN THIS DOCUMENT IS CONFIDENTIAL AND IS EXCLUSIVE PROPERTY OF ORE INCORPORATED. DELIVERY OF THIS DOCUMENT OR ANY COPY THEREOF OR DISCLOSURE OF SUCH INFORMATION TO UNAUTHORIZED PERSONS IS FORBIDDEN WITHOUT EXPRESSED WRITTEN PERMISSION OF ORE INC.

**TO SPECIFY THIS PRODUCT:**

- 1) Indicate product name, product number, description, and size.
- 2) Select material: recycled steel, COR-TEN, or recycled aluminum. If recycled steel or aluminum is specified, select powder-coat color or natural patina finish.
- 3) Select product-specific options. Standard options may be viewed at [ore.design](http://ore.design).